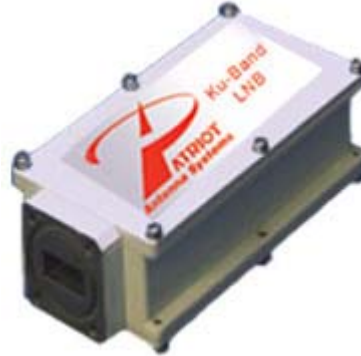


Ku-Band PLL LNB \pm 25 KHz



Input Frequency	11.7 - 12.2 GHz
Output Frequency	950 - 1450 MHz
Noise Figure	0.8 dB
Gain	60 dB min, 63 dB typ, 65 dB max
Gain Flatness	1.5 dB p-p max per 27 MHz segment
Image Rejection	45 dB Min, 60 dB Typ
Output VSWR	2.0:1 Typical, 75 ohm
LO Stability	\pm 25KHz
LO Frequency	10.75 GHz
Phase Noise	-75 dBc/Hz @ 1 KHz
DC Input	+15 to +24 VDC
Current	500 mA max
Operating Temperature	-40°C to +60°C
Input Interface	Flange, WR 75G
Output Interface	75 Ohm, Type "F" Female
Physical Size	5.3 x 2.7 x 1.5 in
Weight	17.6 oz

