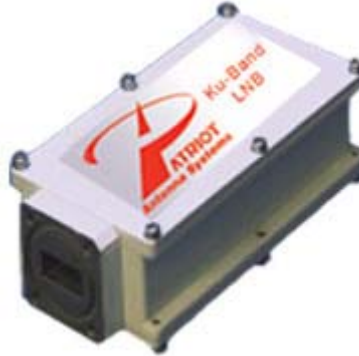


Ku-Band PLL LNB \pm 5 KHz



| | |
|-----------------------|-----------------------------------|
| Input Frequency | 11.7 - 12.2 GHz |
| Output Frequency | 950 - 1450 MHz |
| Noise Figure | 0.7 dB |
| Gain | 60 dB min, 63 dB typ, 65 dB max |
| Gain Flatness | 1.5 dB p-p max per 27 MHz segment |
| Image Rejection | 45 dB Min, 60 dB Typ |
| Output VSWR | 2.0:1 Typical, 75 ohm |
| LO Stability | \pm 5KHz |
| LO Frequency | 10.75 GHz |
| Phase Noise | -75 dBc/Hz @ 1 KHz |
| DC Input | +15 to +24 VDC |
| Current Drain | 500 mA max |
| Operating Temperature | -40°C to +60°C |
| Input Interface | Flange, WR 75G |
| Output Interface | 75 Ohm, Type "F" Female |
| Physical Size | 5.3 x 2.7 x 1.5 in |
| Weight | 17.6 oz |

